



E A S T E R N I N S T R U M E N T S



CentriFlow®

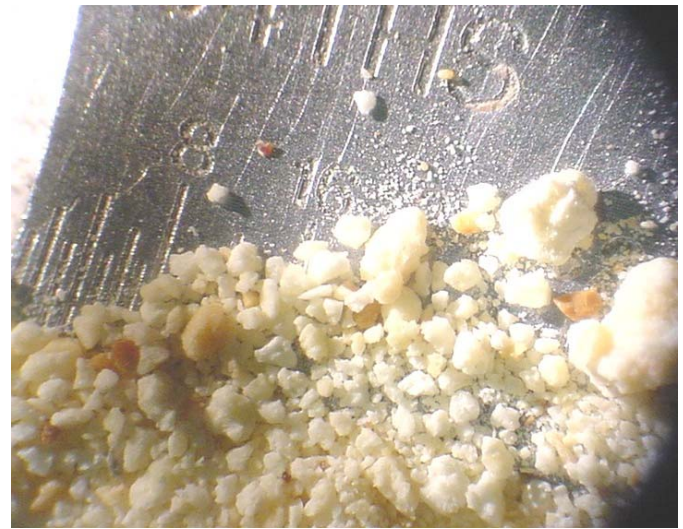
# Material Test Report

Ground Dried Lactose Material



CentriFlow®

Date Tested:	January 18, 2007	Temperature:	Ambient (78°F/25.6°C)
Technician:	Tom Britt	Particle Size:	Fines to 0.125"
Test Location:	Eastern Instruments	Flowability:	Above Average
CFM Model:	3" Type II CentriFlow®	Cohesiveness:	Slight
Meter Capacity:	2.5 ft³/min	Density (lb/ft³):	43 lbs/ft³
Feed System:	Screw Conveyor	Inhibit Setting:	0.200 Volts



Test #1	Mass Flow Rate = 8000 lb/hr				Percent of Volumetric Capacity = 89%		
Run #	Actual Weight	Metered Weight	Actual/Metered	Delta Weight	% Error		
1	32.68	32.58	1.003	-0.10	-0.31%		
2	32.38	32.50	0.996	0.12	0.37%		
3	33.80	34.03	0.993	0.23	0.68%		
4	32.22	32.17	1.002	-0.05	-0.16%		
5	33.10	33.24	0.996	0.14	0.42%		
Average:			0.998				
STD:			0.0041				
% STD:			0.42%				

**Additional Comments:** Tested using a 6" CentriFlow® Type II Meter with UHMW lined flow surfaces. The run times were 15 seconds per batch.

### Accuracy Statement:

"The CentriFlow® Meter will provide accuracy to within  $\pm 1.00\%$  of reading when operating within  $\pm 10\%$  of the calibrated flow rate, as long as the flow rate is within the operational range of the meter."